

SEE WHAT
GLASS
CAN DO
GGI

Anti-Reflective Glass

Features & Benefits

- Eliminates over 99% of reflections - Reduces unwanted residual reflections to under 0.5% per surface. This is eight times less than regular glass making it virtually invisible.
- Improved light transmission - Increases the transmission of visible light up to 98%.
- Neutral reflection color - Ensures neutral and uniform reflection color for the best viewing experience.
- Easy to adapt - Can be combined with Low-E, Solar control and Heat reflecting coatings.
- Abrasion resistant and easy to clean - Easy to clean with appropriate glass cleaner. Durability performance meets ISO standards.



Product Range

- AR 1 sided
- AR 2 sided
- AR Laminated

General Characteristics

	AR 1-sided	AR 2-sided	AR Laminated
Sheet size	88 1/2 x 126"		
Glass type	Low iron		
Glass Thickness	1/4", 3/8"	1/4", 3/8", 1/2"	3/16", 1/2"
Tempered	Yes	Yes	No
Bent	Yes	Yes	No
Laminated	Yes	Yes	No
Printed	Yes	Yes	No
UV Bonded	Yes	Yes	No
Drilling & Notching	Yes	Yes	Yes
Edgework	Yes	Yes	Yes

For more information contact marketing@generalglass.com.

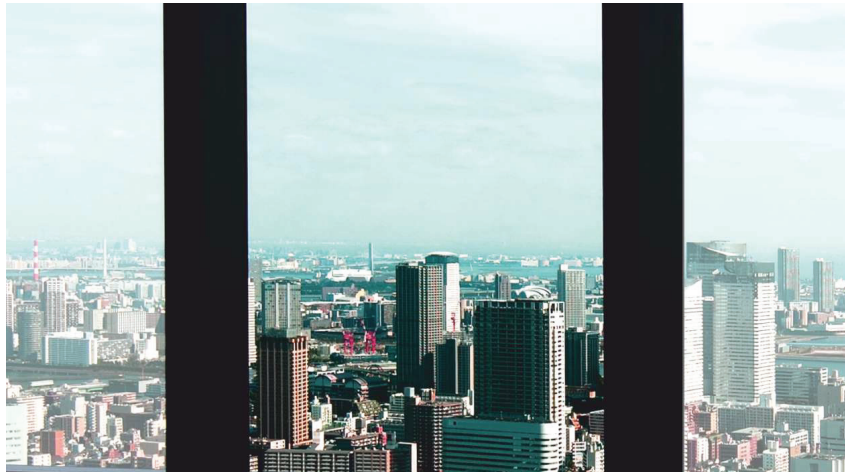
Durability Standards

Standard	Name	Tested Properties
EN 1096-2	Glass in building - Coated glass - Part2: Requirements and test methods for class A, B and S coatings.	Condensation resistance test Neutral salt spray test Abrasion resistance test
DIN ISO 9211-4	Optics and optical instruments - Optical coatings - Part 4: Specific test methods.	Abrasion resistance test Adhesion test Crosshatch test
ISO 9022-2	Optics and optical instruments - Environmental test method - Part 2: Cold, heat and humidity.	Cold, heat and humidity resistance test Climate cycling test

Technical Performance

Glass Type	Thickness	Visual coefficient of reflection $P_v(D65)$ [%]	Light transmittance $t_v(D65)$ [%]	UV transmission t_{uv} (EN410) [%]	U-value U_g 2 [W/m ² k]	Solar heat gain coefficient g [%]	General color rendering index R_a
Regular Float	5/32", 4mm	8.3	90	68	5.8	88	99.3
AR 2-sided	5/32", 4mm	1.0	98	29	5.8	83	99.8
AR Laminated	5/16", 8.8mm	1.0	97	<1	5.6	78	99.3

- Calculations for AR 2-sided based on 4mm thick glass and for AR Laminated based on 8.8mm thick glass.
- The values are calculated based on the standards EN 410 and EN 673, precise values can vary.
- AR and AR Laminated performance is subject to variations due to manufacturing tolerances, glass thickness and glass types.



Product Guidelines

INSTALLATION AND HANDLING

Keep anti-reflective glass in a dry and UV protected environment.

Glass should be protected from rain runoff and the weathering of steel and other building materials. The glass should be regularly maintained by cleaning stains or the glass should not be used in that environment.

Before and after installing the glass the coating should be preserved against mechanical damage (scratching). When transporting ensure the supports, layers, tools, suction cups, etc are clean.

During the installation avoid job site materials from getting onto the glass or remove any spilled material immediately. This includes concrete, lime, stucco. When removing materials that are abrasive use plenty of water and try not to rub the material as it will scratch the glass.

Do not apply stickers to the glass; removal of the stickers can damage the coating.

CLEANING

Use a soft cloth and a water based neutral or low alkaline window cleaner. Ammonia and water solvable organic solvents <5 Vol-%.

Avoid using abrasive cleaners, brushes, clothes, razor blades or other sharp objects. Improper cleaning can cause damage to the anti-reflective coating's optical properties and will void the product's warranty.

Warranty

No claims for defective product will be allowed unless all the above procedures are followed in full.



GGI offers the widest range of high-quality custom fabricated, specialty and float glass products available from a single expert source, delivered on time, with impeccable care and service.

800.431.2042 | sales@generalglass.com | generalglass.com

SEE WHAT
GLASS
CAN DO
GGI